



GOOD BYE CAMP!

A. SCRIBNER



AUG. 11, 1920.



JUMP!

o  
o  
o  
o  
o



A. SCRIBNER

B. MANN

THE FOLLIES  
OF 1920.



P. LOCKIE

MOUNTAIN CACTUS MANY FEET ABOVE SEA LEVEL.

THE TWO DAYS  
(AUGUST 9<sup>TH</sup> & 10<sup>TH</sup>)  
WE HAD THE GARIBALDI DISTRICT  
ALL TO OURSELVES.



PANORAMA RIDGE  
AND  
MIMULUS LAKE.



BLACK TUSK MEADOWS AND GARIBALDI LAKE.

WEST BLUFF. BLACK TUSK EAST BLUFF



ONE OF THE  
4X HARD-TACK DISPENSARIES.



MIMULUS  
CREEK.



T. FYLES

GARIBALDI LAKE IN JUNE.



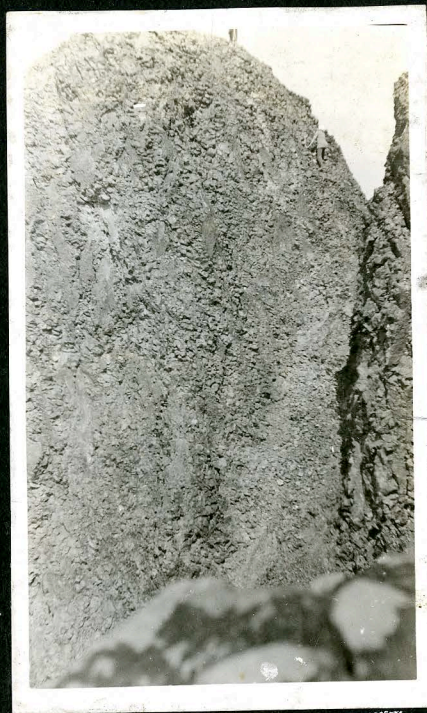
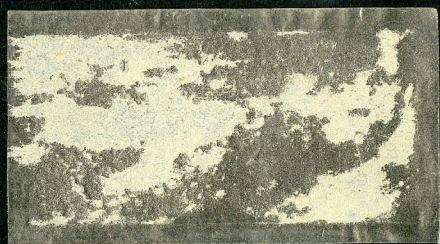
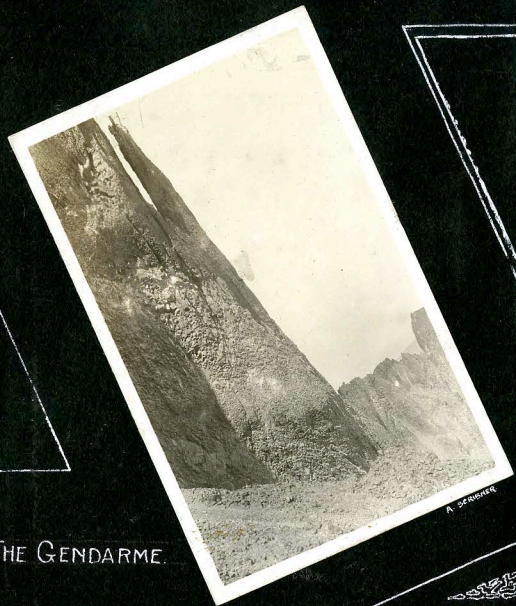
FOUR OF THEM.



COLUMNAR ANDESITE.

THE MAIN PARTY  
BEGAN TO ARRIVE AT  
NOON ON THE 10<sup>TH</sup>,  
AFTER A NIGHT SPENT  
AT STONY CREEK.





MISSES  
MOTHER-  
SPOON,  
—ARDSTONE,  
MRS.  
COPPAGE,  
MISSAS,  
COMPER  
KEANE,  
FEE

MESSRS.  
WHEATLEY  
BAYNE,  
SCRIBNER,  
DODDS,  
JOHNSON  
FYLES  
FORD  
MARLETT  
CARTER  
MANN.

AUG. 11, 1920.



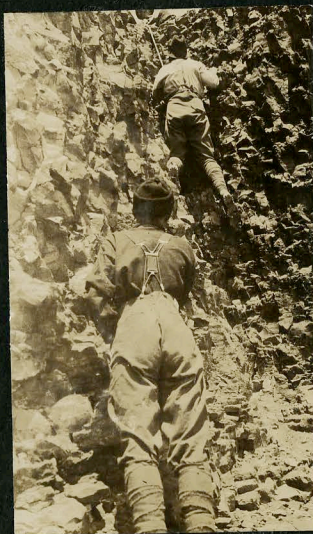
MIMULUS LAKE  
AND THE TUSK FROM PANORAMA RIDGE.

W. WHEATLEY.



A. SCRIBNER.

"CAMERA!"



A friendly hand at the  
chimney

THE BLACK TUSK.



7300 FEET.

THE  
FIRST ORGANIZED TRIP  
OF THE 1920 CAMP,  
BLACK TUSK, 7300'